

Under the Patronage of
His Excellency Sheikh Nahayan Mubarak Al Nahayan
Minister of Higher Education and Scientific Research, United Arab Emirates

Center for Integrated Facility Engineering, Stanford University (CIFE),
Consolidated Contractors Company (CCC) and Projacs International
are pleased to join hands and organize this

First Annual Conference in the Middle East
Building Information Modeling (BIM)
(Vision, Strategy and Implementation)

14th - 15th, December 2011
CERT Technology Park

What is BIM?

Building Information Modeling (BIM) was introduced nearly 10 years ago focusing on 3D modeling of architectural, structural, mechanical, and other key building systems instead of traditional 2D drawings. In addition to revolutionizing information management on construction projects, BIM also enables an effective process of generating and managing building data during the whole life cycle. BIM is far beyond a simple substitution of software. It increases design quality by supporting input from all key project stakeholders during design and allows for the sharing of much richer data between owners, designers, engineers, and constructors than possible today.

When applied for maximum benefit, BIM leads to a new project delivery process that leverages current technology capabilities and matches today's challenging market conditions and requirements. BIM is concerned with both technology and processes. Many projects have shown how BIM leads to money and time savings, a reduction in design errors, higher productivity, and greater business opportunities, in particular for facility owners and operators who own their facilities well beyond construction completion. BIM includes time (planning) and estimation/cost data (often referred to as a 5D concept). BIM covers geometry, spatial relationships, lighting analysis, geographic information, quantities and properties of building components; it can be used to showcase the entire building life cycle including the process of construction and facility operation.

Our conference theme will be focusing on Vision, Strategy and Implementation of Building Information Modeling. This conference is an excellent opportunity for engineers, consultants, contractors, architects, owners and operators of construction projects to engage with this critical topic over the course of the two day agenda.

We look forward to meeting you at the conference in December 2011.

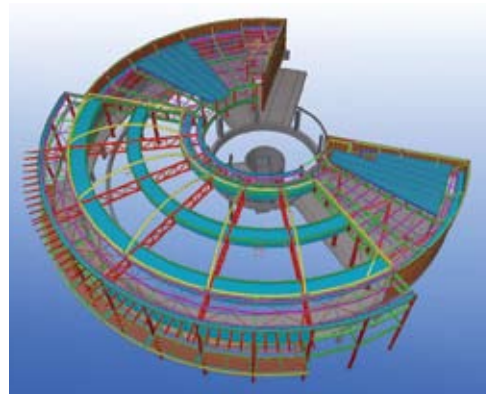
About the conference

This conference will be an interactive conference with case studies and practical implementations. It brings together distinguished speakers to discuss and illustrate BIM application throughout the different phases of the facility life cycle from A/E to construction and facility management. Sufficient time will be given for discussion. Delegates are encouraged to engage in discussion and share their experiences, questions and answers to maximize benefits for all attendees.

Furthermore, the conference is complemented with an exhibition and periods of networking with other delegates and participants.

Certificates

At the end of the conference, participants will receive an attendance certificate from CIFE – Stanford University.



Who should attend?

The conference is targeting CEOs, CIOs, Heads, Directors and managers of:

- Owners and operators
- Civil, Structural, Building services and MEP engineers
- Contractors
- Consultancies
- Architects
- Architectural technology Professionals
- Central and Local Government

Speakers

Zuhair Haddad



Mr. Haddad is the CIO, Corporate Asset and Risk Management for CCC. He is in charge of mapping out & implementing the IT & Communication strategy for CCC group as well as direct control of CCC information systems department, Communication department and E-procurement department. He also oversees the plant department which is in charge of managing CCC's extensive fleet of construction equipment.

He received his Bachelor of Science from the California State University of Chico in Civil Engineering (1976) and a Masters in Construction Management from Stanford University (1981).

His work experience includes work as a civil engineer with Consolidated Contractors Company on several construction projects in Saudi Arabia. After completing his masters he joined Bechtel Corporation in the Estimation Department and then moved to IT group. He then re-joined CCC as Head of the Computer Department

Sensing the lack of credible Construction Management software in the market in early 1980s, he led the development of a full suite software tools that has helped CCC manage the multitude of mega projects in all segments/ disciplines and locations it works in. Ten years ago he promoted & led the establishment of in-house BIM center in Egypt. This center has modeled billions of dollars worth of projects & have grown with branches in Bir Zeit & Greece.

Martin Fischer



Director, Center for Integrated Facility Engineering, Stanford University (CIFE), his research focuses on modeling, predicting, measuring, and improving the life-cycle performance of the built environment. He is known globally for his work and leadership in developing virtual 4D modeling (time plus 3D) methods to improve project planning, enhance facility life-cycle performance, increase the productivity of project teams, and further the sustainability of the built environment. His award winning research results have been used by many small and large industrial and government organizations around the world. He has lived, worked, consulted, and taught in Europe, South

America, North America, and Asia. Martin Fischer has published over 50 refereed journal publications, has given over 20 keynote lectures, over 100 invited presentations, published over 200 conference papers and invited book chapters, and holds one patent. He has guided 15 Ph.D students to complete their thesis as the principal advisor. Among other awards, Dr. Fischer received the Top 25 Newsmaker Award from Engineering News Record in 1996 and the best paper award from the ASCE Journal of Computing in Civil Engineering in 2002.

Luay Khoury



President/CEO and co-founder of Projacs International; the largest Middle East based project and construction management firm with a network of 21 offices in the Middle East, North Africa, Asia, Europe and North America from which a total staff of over 650 provide professional services on about 125 projects with a total construction value of US\$35 billion. Mr. Khoury is in charge of the full management array of corporate planning, development of marketing strategies, HR, administration, finance and operations that cover design and construction management, training and real estate development.

Mr. Khoury has over 28 years of senior executive and professional experience in the Middle East and North America and has been actively involved in a number of prestigious and strategic projects including sports facilities, military cities, government offices, hospitals and hospitality projects. Mr. Khoury is a seasoned lecturer on construction management topics including Contract Management, Value Engineering and Project Controls.

Mr. Khoury holds a B. Sc. degree in Civil Engineering from Kuwait University and an M. Sc in Civil Engineering – Construction Management from Georgia Tech, Atlanta, Georgia, USA.

Ross Donaldson



Joint Group Managing Director with over 30 years of professional experience. Based in Hong Kong and appointed Group Managing Director in 2006, Ross has overseen Woods Bagot's global expansion driving the firm's establishment in North America and consolidation in China, launching thriving studios in San Francisco, New York and Shanghai – during the global financial crisis.

Previously as Director of Woods Bagot's Education and Science Sector, Ross has led the design of international award winning University projects in the Middle East, Asia and Australia, bringing significant advances in collaborative learning and academic workplace environments. Globally acknowledged for a commitment to zero emissions architecture, Ross frequently imparts the firm's innovation on the world stage in a push to reduce the globe's carbon economy through emission controlled urban development.

Prior to joining Woods Bagot in 2001, Ross enjoyed a 17-year academic career along with his private practice.

George Haddad



BE (Electrical), ME (Construction management), George began his career as a consultant with Dar Al Handasah Consultants, where he gained knowledge for implementing the utilization of international codes, standards and practices for major worldwide projects enhancing his construction management academic background. George has enjoyed his 20 years in CCIC where he presided over estimation, proposals, controls, construction, engineering and contributed to all EPC phases of mega projects. George's knowledge and expertise was utilized for all phases of construction of UAE Habshan Field Gas Processing Facilities, Saudi Chevron Petrochemical Plant at Jubail, Karachaganack Processing Complex in Kazakhstan, Oman India Fertilizer in Oman and Ras Gas LNG Plant in Qatar.

George is one of the pioneers who implemented the automation processes in the construction industry, lately applying 3D modeling in planning and controlling of construction works in Habshan 5 Process Plant Project.

Keith Besserud



Director of BlackBox, a research-oriented computational design resource within the Chicago office of Skidmore Owings & Merrill. With design partner, Ross Wimer, Keith set up the BlackBox studio in 2007 to lead the development and integration of advanced computational concepts within the multi-disciplinary design processes of the office. In particular the group is interested in exploiting various types and sources of data to guide form-finding design processes. Within this approach the group relies on parametric frameworks built with scripting expertise and parametric software, as well as a variety of simulation and search optimization tools, including those that are commercially available as well as those that are custom-developed by the team.

Keith received his undergraduate degree from the University of Illinois Urbana/Champaign and his Master of Architecture degree from Georgia Tech. After 20 years of practice he returned to school at the Stevens Institute of Technology where he earned a Master of Engineering degree in the Product Architecture & Engineering program, a highly innovative, intensive, trans-disciplinary program focused on the intersection of design and technology.

Marc Durand



Responsible for technology research and development, implementation and project delivery at iTech. He is a leader in Building Information Model (BIM) implementation with more than eight years' experience in BIM project delivery. Through his in-depth understanding and immense knowledge of what BIM is, Marc offers high-level strategic planning and overall project management expertise. His ability to create compatibility between design and data management ensures seamless coordination of workflow amongst his team and all involved partners.

His previous project experience ranges from a 1,000-square-meter villa design to commercial and health care projects more than 300,000 square meters large. Marc develops as well as adjusts design and data management to meet each individual client's requirements. He is originally from Boulogne Sur Mer, France, where he completed his Masters Degree in Industrial Data Processes at the University of Littoral, Cote d'Opale France. Marc and his family relocated to the United Arab Emirates (UAE) in 2007."



Reijo Hänninen



Senior Executive Consultant (retired CEO), Granlund, Finland will share the Granlund's vision for the role of a building services firm in the facility life cycle, discuss the Granlund's strategy for BIM, highlight the most significant accomplishments with BIM in Granlund's practice, and discuss the related challenges Granlund has faced and is facing.

Granlund is the largest building services design firm in Finland. Over the last 20 years it has consistently allocated about 10% of its staff to R&D with a particular focus on leveraging building information models to support Granlund's design, engineering, and coordination work. Over the same period Granlund has expanded its range of services to cover the entire lifecycle from requirement management to facilities management and continuous commissioning, become a global leader in leveraging BIM for mechanical design, energy and environmental modelling, and building life-cycle management. Granlund is an active member of Building Smart International (International Alliance of Interoperability).

Phillip Williams P.E., LEED AP



Vice President of Webcor Builders and Webcor Consulting Group. He is a Professional Engineer, serves as a member of American Concrete Institute (ACI) Committee 130-D on Sustainability, as the American Society of Concrete Contractors (ASCC) Sustainability Committee Chair and is the co-chair of the Strategic Development Council BIM subcommittee, under the ACI foundation. Under his guidance Webcor was the only design-construction firm to "Road Test" the World Resource Institute (WRI) carbon accounting/green-house-gas (GHG) scope 3 protocol are were subsequently released for commercial use in October 2011.

Dr. Calvin Kam



Dr. Calvin Kam is the Director of Industry Programs at Stanford University's Center for Integrated Facility Engineering (CIFE), where he partners with CIFE industry members and researchers on strategic innovation in areas such as Building Information Modeling (BIM), Virtual Design and Construction (VDC), and sustainable development. Dr. Kam teaches graduate and undergraduate courses as a Consulting Assistant Professor with the School of Engineering at Stanford University. He is advising the Singapore Building and Construction Authority on its a Senior Program Expert with the GSA's National 3D-4D-BIM Program, which he co-founded in 2003. Dr. Kam is the Vice President for Strategic Innovation at Optima, an integrated developer-architect-builder of multifamily and mixed use projects. He is advising the Singapore Building and Construction Authority on its Construction Productivity Roadmap strategic directions (US\$200 million), in which BIM has been identified as a key driver to improve integration and collaboration in its value chain.

Appointed by the President of AIA (American Institute of Architects), Calvin is the 2011 Co-Chairman of the Center for Integrated Practice Leadership Group with AIA National, as well as the 2010 Co-Chairman and 2011 Chairman of the its TAP (Technology in Architectural Practice) National Knowledge Community, which is supported by over 10,000 AIA members. Calvin is a registered Architect in the State of California, a Professional Engineer in the District of Columbia, and a LEED Accredited Professional. A recipient of the AIA National, California Council, and local chapter scholarships, ASCE National scholarships, China Synergy Program for Outstanding Youths, and SOM Foundation Traveling Fellowship among other honors and awards, Calvin received his Master's, Engineer Degree, and Ph.D. from Stanford University.

At age 21, Calvin was the first and the youngest to receive dual bachelor degrees in Architecture and Civil Engineering from the University of Southern California (with the highest honor bestowed on a graduating senior for distinguished leadership and excellent scholarship).

Philip Leung



An architect by profession, joined the Mass Transit Railway Corporation Limited (MTR) in Hong Kong after working in station improvement projects for London Underground, U.K. With MTR for 15 years, now the section manager of an interdisciplinary team of architects and engineers providing design and engineering supports to the operating railways in Hong Kong. He is a pioneer in the application of BIM within MTR and is passionate in the application of VDC to enhance the workflow throughout the life cycle of buildings, from design and construction to operation and maintenance of building assets. Philip brings the owner and user perspective in the application of VDC in a transport company with large station asset portfolios to the conference. Philip graduated from London University and obtained a Master's degree from Cambridge University.

Stewart Carroll



Chief Operating Officer, Beck Technology Stewart joined Beck Technology in 2000 as part of Beck's acquisition of Pro Reflex from PTC. Stewart was one of the lead designers of the original Reflex technology that PTC purchased from Reflex Systems in the UK. As leader of Beck Technology he runs all aspects of the corporation, corporate strategy and vision, and continually evangelizes the use of our technology. He has been a lead AEC technologist for well over a decade and continually speaks on the integration of cost and scoping technologies to owners and developers. Stewart serves as key note speaker for various trade shows, conferences and councils and is an expert on AEC technology and its application in the marketplace. He received his BS in Computer Sciences from the University of Iowa.

Atul Khanzode, PhD



Director of DPR Construction's Construction Technologies Group responsible for the Virtual Design & Construction, Operations and Preconstruction Technologies and strategic technology initiatives at DPR. Works with project teams across the country to implement Virtual Building and Lean Construction tools and processes. Working on healthcare, biotech and advanced technology projects for DPR Construction in the last 15 years.

Recently completed his Doctorate in Construction Engineering and Management, focused on Virtual Building and Lean Construction, at the Center for Integrated Facilities Engineering (CIFE), Stanford University. In addition he has a Masters Degree in Civil and Environmental Engineering from Duke University, Durham NC and a Degree of Engineer in Construction Engineering and Management from Stanford University, Stanford CA. DPR Construction is a national general contractor and construction management company based in Redwood City, California. Ranked number 22 on Fortune Magazine's 100 Best companies to work for 2011, DPR specializes in technically complex and sustainable projects for advanced technology, life sciences, healthcare and corporate office markets. DPR is recognized as an industry leader in the use of Lean Construction Methods and Building Information Modeling Technologies to deliver enduring value to customers on complex construction projects.

David Wilcox



Engineering and Automation Manager at Bechtel, David Wilcox has led the Bechtel BIM community in their Civil business unit as it's technical specialist since 2006. David is an automation specialist with more than 25 years experience in the application of Computer Aided Design technologies and work processes in the architectural, engineering design and construction industry. He has been involved in computer aided building design and modeling (now known as BIM) since 1985 when he both studied and worked at the ABACUS research unit at Strathclyde University, gaining an MSc in the subject as well as being involved in the research and development of early software tools for 3D modeling, animation, energy simulation and expert systems. Having applied those technologies to prestigious rail projects in the UK, (High Speed One and Crossrail) he re-located to Abu Dhabi (UAE) in 2008. He is presently the Engineering Manager for Data and Information Management on the Khalifa Port and Industrial Zone (KPIZ) project.

Menno de Jonge



Menno has been working in the field of ICT in construction since the 1980's and has been active in the field of technical and business information systems within Ballast Nedam. Currently he holds the position of Director of Innovation. Next to that he is active as Vice President of ENCORD, the European Network of Construction Companies in R&D and Innovation and one of the leading actors in the ENCORD Virtual Construction Platform. He has been one of the early adopters of BIM in the construction industry, which is now being used in real projects. In his presentation he will be sharing the work within the ENCORD organisation on ICT in construction and the 5D initiative to bring BIM to a higher level within our industry.

Dr. NajeebMohd. Al Nauimi



The former Minister of Justice in Qatar and a holder of a PHD in International Law from Dundee University in the United Kingdom, Dr. Najeeb is an international lawyer where he has practiced International Litigation in the International Court of Justice and is practicing internationally in the US, France, and the UK. He also owns and runs Dr. Najeeb Al-Nauimi Law Offices in Qatar. Dr. Najeeb is also the CEO of Bin Mohanna Holding Group Co., a Qatari holding group with interests in real estate, industrial investment, contracting, and the manufacturing and trading of construction materials. He is an owner and user of BIM, where this technology is currently being used to help in the planning and supervision of the construction of the 67 floor Bin Mohanna Trade Center.

Tahir Sharif

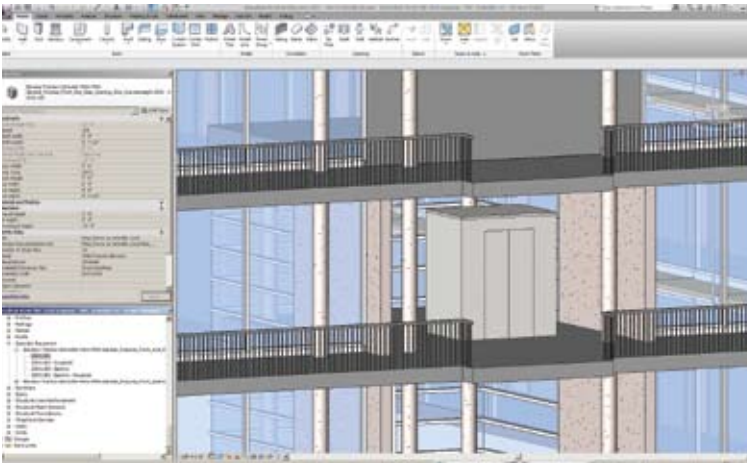


Tahir has over 20 years experience at senior management level. Working with service providers, vendors, developers, consultants and contractors he has advised on BIM usage and Integrated Project Delivery implementation for Iconic Projects throughout the Middle East. He has written several articles on BIM, presented papers internationally and given TV/radio interviews on BIM. Tahir has been instrumental in promoting awareness of the integration of 3D platforms with planning, cost and management technologies (4D and 5D respectively) for construction and design process internationally. He was influential in encouraging the adoption of BIM technologies in Governments as well as a number of leading construction companies around the world. He has worked with business throughout EMEA, in Asia Pacific, and the USA. Tahir Sharif – Founding President of buildingSMART MENA & India.

Sabri Ismail, CEO, BIMES



Sabri is a professionally qualified civil engineer with a masters degree from Alexandria University. He has for the last 5 years, been involved in developing technologies and standards for construction industry. Operating at senior management level, Sabri specialized at improving the processes of contractors in MENA region. In the past 3 years, Sabri served as Vice President of buildingSMART MENA & India and CEO of BIMES.



About the Organizers

Center for Integrated Facility Engineering, Stanford University (CIFE), <http://cife.stanford.edu>

The CIFE mission is to be the world's premier academic research center for Virtual Design and Construction of Architecture – Engineering – Construction (AEC) industry projects ... to support exceptionally reliable engineering and management practices to plan, design, construct and operate sustainable facilities.

The Center for Integrated Facility Engineering brings together faculty members, researchers, students, and industry participants from diverse domains, such as, civil engineering, architecture, computer science, business, and law.

Stanford is recognized as one of the world's leading universities. Established more than a century ago by founders Jane and Leland Stanford, the university was designed, as clearly stated in the Founding Grant, to prepare students "for personal success and direct usefulness in life" and "promote the public welfare by exercising an influence on behalf of humanity and civilization." Today Stanford University remains dedicated to finding solutions to the great challenges of the day and to preparing our students to become the next generation of leaders.

Consolidated Contractors Company (CCC), <http://www.ccc.gr>

The CCC is a leading diversified company carrying out construction, engineering, procurement, development and investment activities internationally with emphasis on the Middle East region. CCC is committed to providing reliable, amicable, and professional service to our valuable clients, and to being supportive to local businesses and social activities, friendly to the environment as well as being proactive in the socio-economic environments within which we operate. appreciation of our clients' interests, evidenced by meeting their requirements and insuring high quality work, is the prime directive of our management. growth and profitability are maintained through innovation, technical enhancement, and adaptability to all our markets. profitability is directed towards sustaining growth and to providing satisfactory returns to our shareholders. commitment to growth is firmly linked to our commitment to our employees' continuous development and rewarding careers. We are also devoted to our employee's safety and health, job security, and welfare. Strength emanates from our distinct culture, strong and close relationships with clients, employees' competence and loyalty, entrepreneurial and flexible management, capability, dynamism, focus on quality and safety, and commercial acumen.

Projacs International, <http://www.projacs.com>

Projacs International is the largest Pan-Arab project management firm boasting 21 offices in 21 major cities in the Middle East, North Africa, Asia, Europe and North America. Established in 1984, Projacs has over 600 professional staff offering customized services to a variety of clients in the public and private sectors. Projacs helps its clients achieve great visions by successfully delivering hundreds of projects across 24 countries.

Projacs offers specialized services and leadership in a diversity of projects from government buildings to utility plants. Other project types include residential and commercial developments, educational facilities, hotels and resorts, sports centers, airports, oil and gas plants, car assembly plants, infrastructure and highways, healthcare facilities, retail developments, and palaces and private homes. Projacs works directly with owners, developers, hotel operators, tenants, educational institutions, hospital operators, financial institutions, funding organizations, project managers, consultants, contractors and other stakeholders.

About the Sponsors



Consolidated Contractors Company (CCC)

<http://www.ccc.gr>



Projacs International

<http://www.projacs.com>



BIM Engineering Solutions

<http://www.bimes.com>



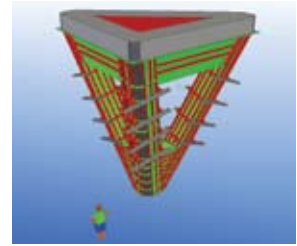
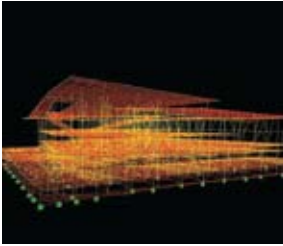
Tekla

<http://www.tekla.com/ae>



iTech Management Consultancy LLC

<http://www.itechholding.com>



Agenda

Wednesday, December 14, 2011

BIM Vision Strategy

08:00 – 08:30 Registration

08:30 – 10:00 Opening Ceremonies
Welcome Message and Keynotes
[CIFE, CCC, Projacs]

10:00 – 10:30 Break / Exhibition / Networking

10:30 – 12:30 BIM – Enabled Strategy: Owner Cases and Perspectives
[MTR, GSA, BIMES]

12:30 – 13:30 Lunch / Exhibition / Networking

13:30 – 15:30 BIM-Enabled Strategy: Contractor Cases and Perspectives
[Beck, DPR, Bechtel, iTech]

15:30 – 17:00 Break / Exhibition / Networking

Thursday, December 15, 2011

BIM Implementation

08:30 – 10:00 BIM Design
[Woods Bagot, SOM, Granlund]

10:00 – 10:30 Break / Exhibition / Networking

10:30 – 12:00 BIM in Construction
[Webcor, Tekla, CCC]

12:00 – 13:00 Lunch / Exhibition / Networking

13:00 – 14:30 Standards and Interoperability
[Fiatech, Encord, BuildingSmart]

14:30 – 15:00 Closing Remarks
[CIFE]

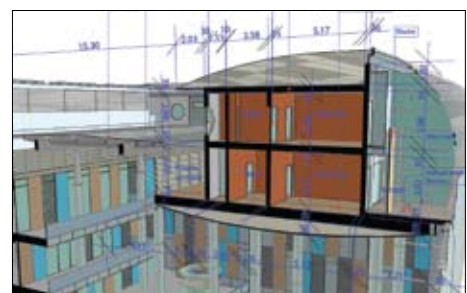
15:00 – 17:00 Break / Exhibition / Networking

Registration fees

- Standard Fees:** US \$650 for one participant
- Group Rates:** US \$2,000 for five participants

▶▶▶▶ Registration fees includes

- /// Admittance to all conference events, seminars and exhibition
- /// All conference materials and presentation in pleasant bag
- /// Refreshments, Snacks Breaks and Lunch
- /// Receiving an attendance certificate from CIFE – Stanford University



Please fill on the Registration Form below and send it to :

Conference Coordinator Ms. Lily Aljentera
Al Barsha Boutique Building, Al Barsha First, Dubai, UAE
Office No. 204, P.O. Box 31155, Dubai, UAE
Tel: + 971 4 4572445, Fax: + 971 4 4572446. Email: Dubai@projacs.com

Registration form

My contact information:

Name:

Job Title:

Employer:

Telephone No:

Mobile No:

Fax No:

Email:

P.O. Box

Postal Code:

City:

Country:

Payment & Invoice Information:

Wire transfer

Contact person below for coordination:

Name:

Job Title:

Email:

I hereby declare that I have read and understood the terms and conditions stated in the registration information section:

Name:

Date:

Signature: